

LEEDS *city* MUSEUM



Make your own museum window

As many of us live, work and educate ourselves at home, let's stay connected, share stories and learn about each other.

From the 1930s, Leeds City Museum highlighted objects in their weekly 'Museum Window' display. We're starting this up again and want everyone involved.

We want you to make your own museum window.

Tips for making a museum window

1. Choose your objects.

Your objects could have an interesting story behind them, be something you use every day or spark joy. Use as many or as few things as you like.

2. Find some object stands.

Have a look around for things to prop objects up. Egg boxes, tin cans or plastic containers work well.

3. Write some object labels (if you want to).

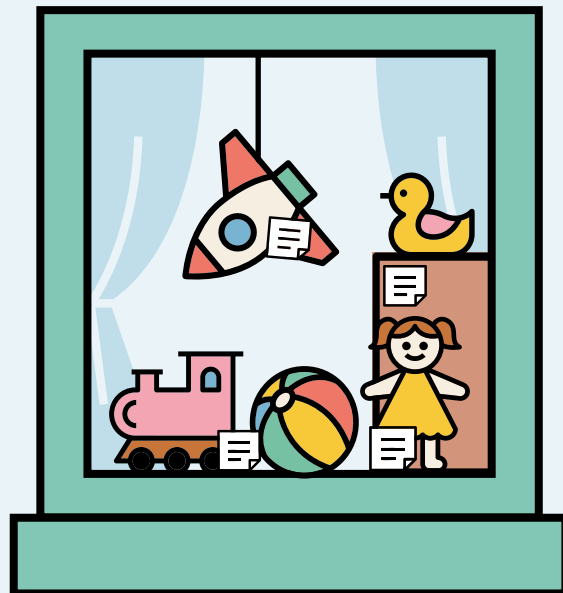
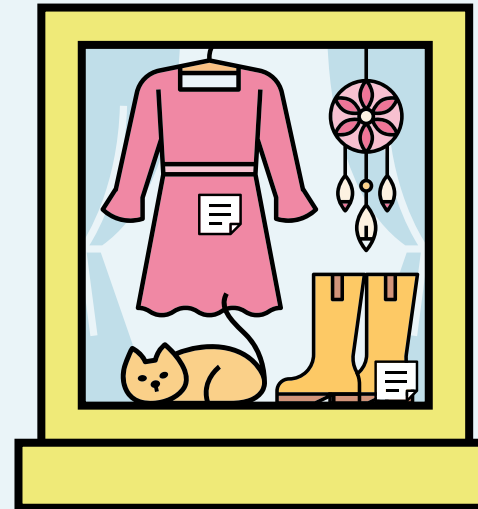
Labels will help people find out about your objects. Let people know what the object is, when it was made and why you're showing it.

4. Display your objects.

You can order your display however you like, maybe by date, story or which objects you think look best together.

5. Safety first!

Make sure that what you've chosen to display in your window isn't highly valuable, and doesn't divulge personal information.



LEEDS *city* MUSEUM

How to share

Share photos of your window
with us on social media:



[@LeedsCityMuseum](#)

or by email

city.museum@leeds.gov.uk

We'd also love you to share a video
of you talking about your display.

**In this time of isolation,
let's get to know each other.**

